

WZG-6B Wave Velocity Tester

WZG-12A MASW Seismography

Applications:

It applies to engineering geological prospecting, in various fields such as hydrology, electricity, railway, bridge, city construction, traffic, etc, and in petroleum, coal, uranium and groundwater exploring.

Functions:

- Wave speed (sheared wave) survey
- Transient multifold Rayleigh wave prospecting
- Multi-wave high density seismic imaging
- Shallow refraction survey
- Foundation pile inspection
- Civil engineering quality detection
- Site constant shake survey
- Shake-to-blasting survey

Main Features:

- 24-bit A/D-Maximum sampling rate is 10 μ s and 50 μ s for 3-channel and 6-channel operation respectively.
- Perfect display of original signals-Fine amplitude consistency and phase consistency, super-low distortion, advanced high-cut filter with suppression more than 72dB .
- High-speed data transferring by USB ports.
- Sampling and data transferring can carry out simultaneously, owing to the advanced hardware.
- Trigger signal is available to sampling at any time, for background noise is always being monitored.
- Windows Operating System supports data sampling in various kinds of seismic working modes.
- Channel number (max 128) to be displayed on the screen is defined by; support convenient amplitude balance display and clear static time label line display.
- Flexible configuration, easily extendable.
- Shake proof, waterproof and dust proof.



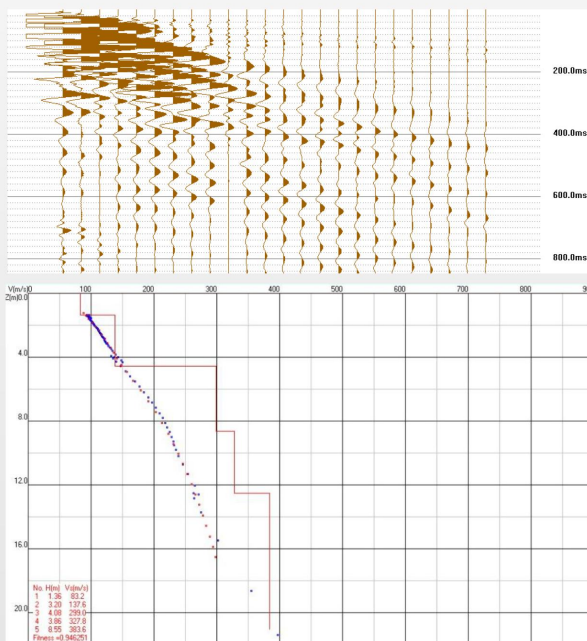
LANGE CO., LTD

Email: sales@langeinstrument.com

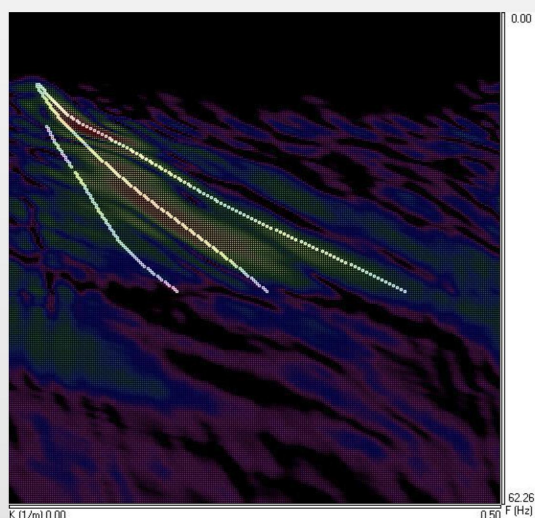
Web: www.langeinstrument.com

Channel	6/12 channels
Sampling points	1024, 2048, 4096, 819, 16384 1M and multi-notch options for ground micro-tremor
Sampling rate	10 μ s, 25 μ s, 50 μ s, 100 μ s, 200 μ s, 500 μ s, 1ms, 2ms, 5ms, 10ms, 20ms; ground micro-tremor is 1ms~200ms, multi-notch
A/D converter	24bit
Signal stack enhancement	32bit
Dynamic range	140dB
Band-pass width	0.1Hz~4000Hz
Noise	1 μ V, full frequency
Amplitude consistency	$\pm 0.2\%$
Phase consistency	$\pm 0.01\text{ms}$
Distortion	$\pm 0.05\%$
Time delay	0~9999ms
Data format	SEG-2
Working temperature	0°C~+50°C, 90%RH
Storage temperature	-20°C~+60°C
Power supply	DC12V 0.8A (built-in rechargeable battery DC12V 8AH)
Dimension	325mm * 235mm * 185mm

CASE STUDY



- Surface wave data
- Measuring result
- FK field map of surface wave



LANGE CO., LTD

Email: sales@langeinstrument.com

Web: www.langeinstrument.com