

Multi-channel Engineering Seismography

WZG-24B

- 24 channels
- Shallow reflection and refraction
- External tablet PC



WZG-24C/48C

- 24 /48 channels
- Shallow reflection and refraction
- Built-in touch-screen PC



Applications:

- Inspecting building base, roadbed and civil engineering
- Engineering inspection
- Environmental and geologic hazards detection and evaluation
- Large-scale and medium-scale water reservoir monitoring
- Bridge engineering inspection

Functions:

- Multi-wave seismic
- Wave speed (sheared wave) survey
- Transient multifold Rayleigh wave prospecting
- Multi-wave high density seismic imaging
- Shallow reflection survey
- Shallow refraction survey
- Foundation pile inspection
- Civil engineering quality detection
- Site constant shake survey
- Shake-to-blasting survey

Main Features:

- All in one unit with a high stability: The integrated tablet PC with a high configuration. The reasonable structure design features with shakeproof, dustproof and waterproof.
- The internal larger lithium battery with a long endurance.
- Fast sampling: 24-bit A/D, minimum Sample interval is 50μs for 24 channels.
- Window 8 system enable the easy and fast operation.
- To transfer data by USB port.
- Powerful software: the new version software is visible on long section and colorful graph with a high resolution.
- Perfectly displaying original signals: amplitude and phase are of high consistency, low distortion, with advanced high-cut wave filter which is better than that for 72dB; original signals are presented once again.
- Background noises are always being monitored; therefore, trigger signals can be received at any time to trigger sampling.
- Flexible configuration, easily extendable: customer can choose WINDOWS according to their own requirement.

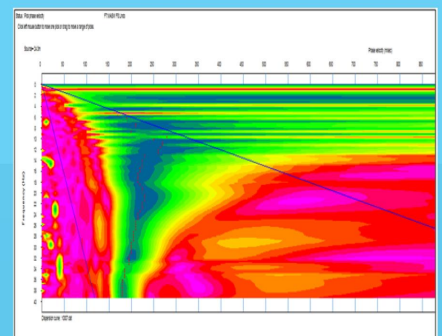
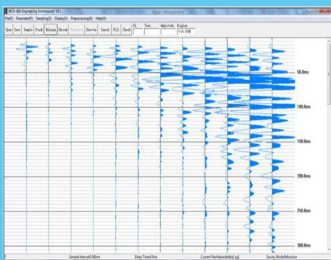
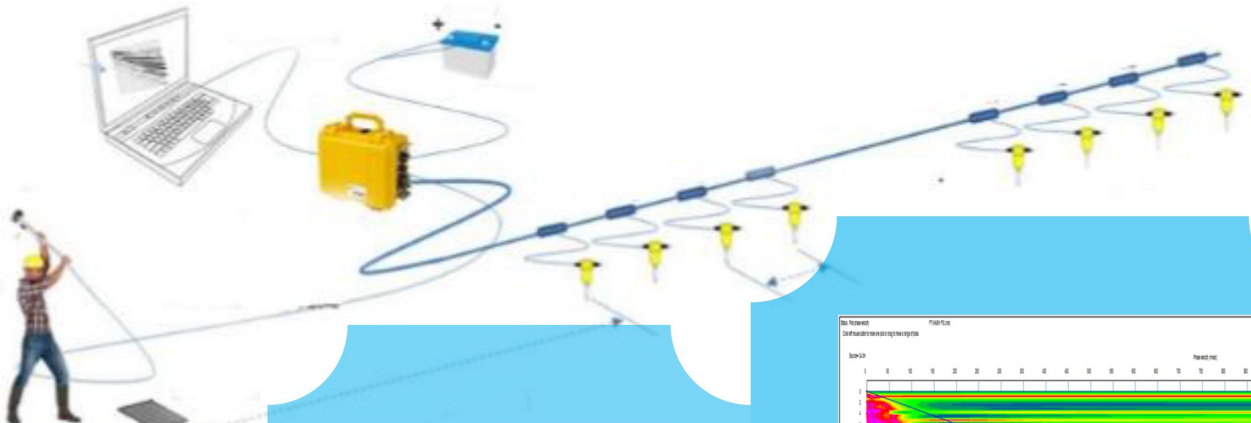


LANGE CO., LTD

Email: sales@langeoinstrument.com

Web: www.langeoinstrument.com

Channel number	24 /48
Sample stations	1024, 2048, 4096, 8192, 16384
Sample frequency	a, Generally, 10μs, 25μs, 50μs, 100μs, 200μs, 500μs, 1ms, 2ms, 5ms, 10ms, 20ms b, For micro-tremor survey, 1ms ~ 200ms optional
A/D converter	24 bit
Signal stack and amplification	32 bit
Dynamic range	144dB
Frequency bandwidth	0.1Hz ~ 4000Hz
Noises	1μV(full-frequency state)
Amplitude consistency	±0.2%
Phase consistency	±0.01ms
Distortion	±0.05%
Time lapse	0~9999ms
Input resistance	20k
Crosstalk suppression	≥90dB
Low-cut filter steepness	Software filter
High-cut filter steepness	72dB/ frequency doubling
50Hz trap filter	40dB
PC (not WZG-24B)	<ul style="list-style-type: none"> • CPU: not less than Intel Core i3 • Memory: not less than 4G • Solid State Drive: no less than 64GB • Display: 12-inch bright LCD screen , resolution 2160 x 1440 • Input Device: multitouch • Interface: three USB ports • Operating System: Windows 8.1
Internal battery	Lithium battery for 18 hours continuously work
Date format	SEG-2
Working temperature	0℃~50℃, 90%RH
Weight	12.3kg (WZG-24C), 12.8kg (WZG-48C), 10kg(WZG-24B)



LANGEO CO., LTD

Email: sales@langeoinstrument.com

Web: www.langeoinstrument.com